

MXZ series

R410A

DC Inverter

HEAT PUMP

Outdoor Units



MXZ-A14WV
MXZ-A18WV

2port

Connectable indoor units



MSZ-A09/12YV



SLZ-A09/12AR

Other connectable indoor units



MSC-GA20/25/35



MCFH-GA35



SEZ-A09CR/SEZ-A12AR



MSZ-CA25/35



MSC-CA20/25/35

MXZ Specifications

Type				Inverter Multi Split Heat Pump - up to 2 indoor units			
Model Name				MXZ-A14WV		MXZ-A18WV	
Outdoor Unit				MXZ-A14WV		MXZ-A18WV	
Power Supply [V, Phase, Hz, Source]				230, single, 50, In / Out Separate Power Supply			
Cooling	Capacity	Rated	kW	4.0		5.4	
		Min. - Max.	kW	1.53 - 4.5		1.55 - 6.0	
	Power Input	Rated	kW	1.15		1.86	
		EER		3.28		2.78	
	SPL [Outdoor]	Rated - (Silent)	dB(A)	EEL Rank		A	
				D			
Air Volume [Outdoor]		CMM(m ³ /min)	41		41		
Heating	Capacity	Rated	kW	4.5		6.6	
		Min. - Max.	kW	1.56 - 5.0		1.58 - 7.2	
	Power Input	Rated	kW	1.06		1.77	
		COP		3.98		3.57	
	SPL [Outdoor]	Rated - (Silent)	dB(A)	EEL Rank		A	
				B			
Air Volume [Outdoor]		CMM(m ³ /min)	41		41		
Max. Running Current			A	12.0		16.7	
Max. Total Capacity of all Indoor Units			kW	6.8		6.8	
Outdoor	Dimensions	Height	mm	640		640	
		Width	mm	840		840	
		Depth	mm	330		330	
		Weight	kg	52		52	
Ext. Piping	Diameter	Liquid (ϕ)	mm	6.35 x 2		6.35 x 2	
		Gas (ϕ)	mm	9.52 x 2		9.52 x 2	
	Max. Length	Total - Each	m	30 - 20		30 - 20	
				10		10	
Guaranteed Operating Range [Outdoor]	Cooling	°C	+21 ~ +43		+21 ~ +43		
	Heating	°C	-10 ~ +24		-10 ~ +24		

Running Current and Power Input figures are for Outdoor unit only.

MXZ-A series

R410A

DC Inverter

HEAT PUMP

Outdoor Units

4port



MXZ-4A80VA

3port/4port



MXZ-3A54VA
MXZ-4A71VA

Connectable indoor units



MSZ-FA25/35



MSZ-GA22/25/35



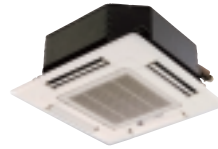
MSZ-GA50/60/71



MFZ-KA25/35/50



PCA-RP50/60/71



SLZ-KA25/35/50



PLA-RP50/60/71



SEZ-KC25



SEZ-KA35/50/60



PEAD-RP50EA



PEAD-RP60/71GA

MXZ-3A54VA: Indoor units of up to 5.0kw size can be connected.

MXZ-4A71VA: Indoor units of up to 6.0kw size can be connected. (Except for PEAD-RP60GA)

MXZ-4A80VA: Indoor units of up to 7.1kw size can be connected.

MXZ Specifications

Type (Inverter Multi Split Heat Pump)				up to 3 indoor units		up to 4 indoor units	
Model Name				MXZ-3A54VA		MXZ-4A71VA	
Outdoor Unit				MXZ-3A54VA		MXZ-4A71VA	
Power Supply [V, Phase, Hz, Source]				230, single, 50, Outdoor Power Supply			
Cooling	Capacity	Rated	kW	5.4	7.1	8.0	
		Min. - Max.	kW	2.9 - 6.8	3.7 - 8.8	3.7 - 9.2	
	Power Input	Rated	kW	1.295	1.93	2.19	
	EER			3.87	3.44	3.45	
		EEL Rank		A	A	A	
	SPL [Outdoor]	Rated - (Silent)	dB(A)	46 - (43)	48 - (45)	46 - (44)	
Air Volume [Outdoor]			CMM(m ³ /min)	42.1	42.1	42.1	
Heating	Capacity	Rated	kW	6.8	8.6	9.4	
		Min. - Max.	kW	2.6 - 9.0	3.4 - 9.0	3.4 - 11.6	
	Power Input	Rated	kW	1.455	1.95	1.93	
	COP			4.38	4.13	4.56	
		EEL Rank		A	A	A	
	SPL [Outdoor]	Rated - (Silent)	dB(A)	48 - (44)	50 - (46)	48 - (45)	
Air Volume [Outdoor]			CMM(m ³ /min)	41.2	46.5	43.8	
Max. Running Current			A	16.4	16.4	17.4	
Max. Total Capacity of all Indoor Units			kW	10.0	12.5	13.6	
Outdoor	Dimensions	Height	mm	710	710	900	
		Width	mm	840 (+30)	840 (+30)	900	
		Depth	mm	330	330	320	
	Weight			kg	57	58	70
Ext. Piping	Diameter	Liquid (φ)	mm	6.35 x 3	6.35 x 4	6.35 x 4	
		Gas (φ)	mm	9.52 x 3	9.52 x 3 + 12.7 x 1	9.52 x 3 + 12.7 x 1	
	Max. Length	Total - Each	m	50 - 25	60 - 25	70 - 25	
		Max. Height		m	15 / 10*	15 / 10*	10
Guaranteed Operating Range [Outdoor]	Cooling	°C	-10 ~ +43	-10 ~ +43	-10 ~ +43		
	Heating	°C	-10 ~ +24	-10 ~ +24	-10 ~ +24		

Running Current and Power Input figures are for Outdoor unit only.

*If the outdoor unit is installed higher than the indoor unit, max. height is reduced to 10m.

MXZ-8A140VA

A Variety of Indoor Units

Consisting of 27 Models in 10 Types Allows Your Best Selection.

Wall Mounted



MSZ-FA25/35VA



GA22/25/35VA



MSZ-GA50/60/71VA

Ceiling Cassette



SLZ-KA25/35/50VA(L)



PLA-RP35/50/60/71AA

Compact floor Standing



MFZ-KA25/35/50VA

Ceiling Concealed



SEZ-KC25VA



SEZ-KA35/50/60VA



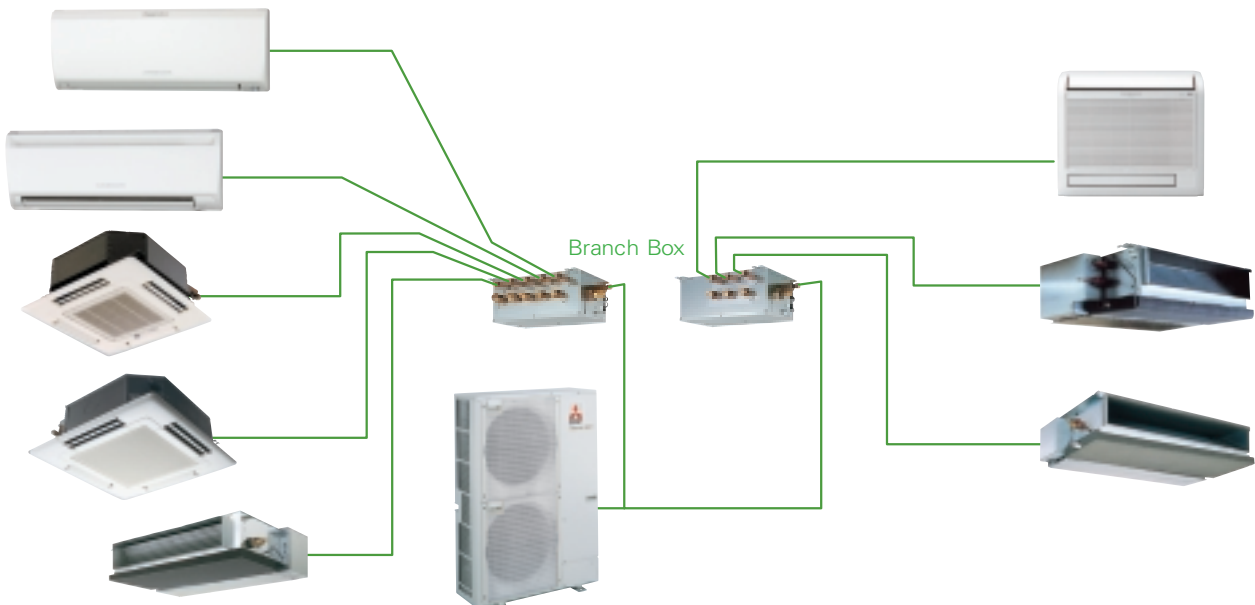
PEAD-RP50/60/71EA



PEAD-RP60/71GA

for example

Up to 8 indoor units can be connected.



*Compact Floor Standing type can also be connected

MXZ-8A140VA Specifications

Type			Inverter Multi-Split - up to 8 indoor units	
Model Name (Outdoor unit)			MXZ-8A140VA	
Power Supply [V, Phase, Hz, Source]			220 / 230 / 240 , single, 50, outdoor Power Supply	
Cooling	Capacity	Rated	kW	14.0
	Power Input *1		kW	3.79
	EER *2			3.52
		EEL Rank		A
	SPL	Rated - Silent	dB(A)	50 - 47
	Air Volume		m³/min	100
Heating	Capacity	Rated	kW	16.0
	Power Input *1		kW	3.90
	COP *2			3.91
		EEL Rank		A
	SPL	Rated	dB(A)	52
	Air Volume		m³/min	100
Number of Connectable Indoor units			Max. 8	
Max. Total Capacity of all Indoor Units			kW	18.5
Max. Running Current			A	29.5
Breaker Size			A	40
Outdoor	Dimensions	Height	mm	1,350
		Width	mm	950
		Depth	mm	330
	Weight		kg	128
Ext. Piping	Diameter	Liquid (φ)	mm²	9.52 x 1
		Gas (φ)	mm²	15.88 x 1
	Max. Length	Total / Each	m	115 / 70
	Max. Height *3		m	30 (20)
Guaranteed Operating Range [Outdoor]	Cooling		°C	-5 ~ 46°C
	Heating		°C	-10 ~ 21°C

*1) The "power input" data is only for outdoor units.

*2) In case of connecting 3 units of MSZ-GA60VA. COP is for the whole system including indoor units and a branch box.

*3) In case of installing outdoor unit lower than indoor unit : 20m

PAC-AK30/50BC Branch Boxes Specifications

Type			Branch Box		
Model Name			PAC-AK50BC	PAC-AK30BC	
Connectable Number of Indoor Units			Max. 5	Max. 3	
Power Supply [V, Phase, Hz, Source]			220 / 230 / 240, single, 50, Outdoor Power Supply		
Power Input		kW	0.003	0.003	
Running Current		A	0.05	0.05	
Drain Hose* Size		mm	O.D. 20 (VP - 16)		
Dimensions [HxWxD]		mm	198 x 450 x 280		
Weight		kg	9.3	8.1	
Piping [diameter]	Branch [Indoor side]	Liquid (φ)	mm	6.35 x 5	
		Gas (φ)	mm	9.52 x 4, 12.7 x 1	
	Main [Outdoor side]	Liquid (φ)	mm	9.52	9.52
		Gas (φ)	mm	15.88	15.88
Connection Method			Flared	Flared	
Wiring	to Indoor Unit		3-wire + Earth wire		
	to Outdoor Unit		3-wire + Earth wire		

*to be locally purchased

Piping Length and Height Differential

		MAX
Total piping	(A+B+C+D+E+F+G+H+I+J)	115m
Outdoor → Branch Box	(A+B)	55m
Branch Box → Indoor	(C+D+E+F+G+H+I+J)	60m
	(Each C, D, E, F, G, H, I, J)	15m
Outdoor → Indoor	(Farthest)	70m
Height difference	Outdoor - Indoor	30m*
	Outdoor - Branch Box	30m
	Branch Box - Indoor	15m
	Indoor - Indoor	12m

*In case of installing outdoor unit lower than indoor unit : 20m.